

JETMASTER®

DIRECT PRINT PHOTO WRAP

Print Flat - Ship Flat - Fold - Display

It used to be difficult and expensive to ship canvas wraps to your customers. Now you can print and ship them flat and your customer can easily assemble the frame in their own home or office.

Available in smooth and textured options, the JetMaster Direct Print is ideal for home décor, disposable point of sale displays as well as exhibition graphics and signage. The durable and lightweight prints can be stored and shipped flat without damage and be sold flat straight from the shop floor.

Simply position the flat frame on a UV flatbed printer, print, then either ship flat or create an instant canvas frame.

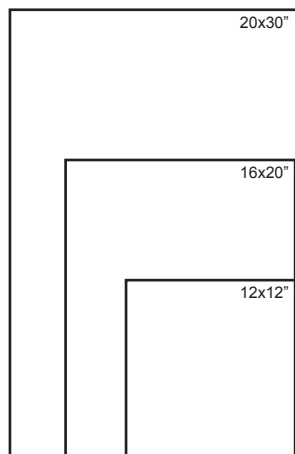
Applications:

- Wall Art and Photo decor
- Display for home or office
- Disposable display and trade show graphics
- Temporary signage
- Point of Sale display

General Specifications:

- Thickness: 2.2mm
- Double walled corrugated
- PSA back layer
- Recycled content
- Recyclable
- No tools required
- Direct print (UV)
- Simulates stretch canvas / textile
- Prints and ships flat
- Easy assembly
- Die cut holes for hanging

Size (Inches)	Printer Type	Finished Face Size		Completed Frame Depth	
		mm	inches	mm	inches
16x20	UV Flat Bed / UV Hybrid	406 x 508	16 x 20	38	1.5
20x30	UV Flat Bed / UV Hybrid	508 x 762	20 x 30	38	1.5
12x12	UV Flat Bed / UV Hybrid	305 x 305	12 x 12	38	1.5



All sizes are available in smooth and textured finishes.

Printer Compatibility:

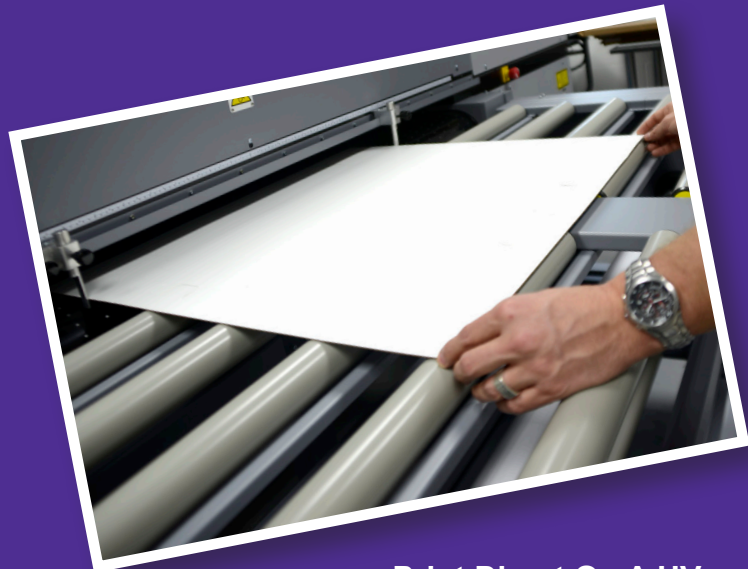
- ✓ Swiss Qprint Nayla
- ✓ Jetrix 2030
- ✓ Océ
- ✓ EFI/Vutek
- ✓ FujiFilm
- ✓ Scitex
- ✓ Roland

JETMASTER®
Image Display Systems

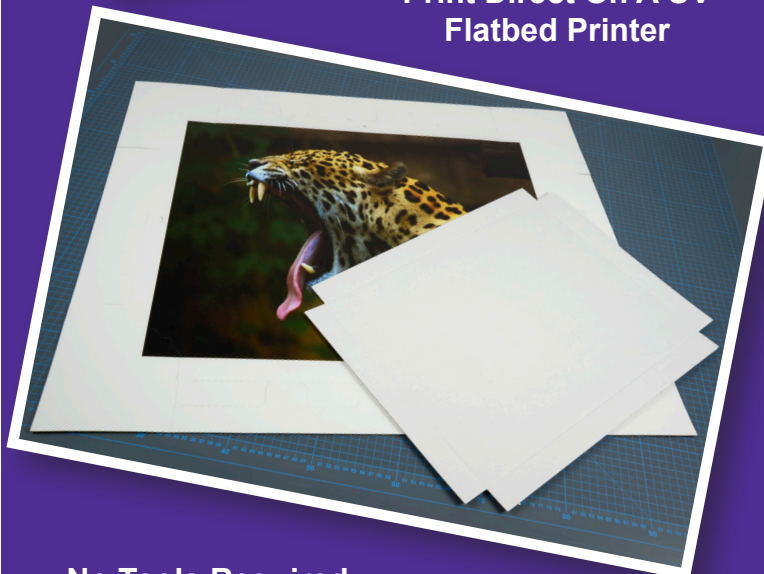


The JetMaster Image Display Systems Range is manufactured and distributed by Innova Art. For more information about Innova and their range of digital media visit www.innovaart.com

Display System - Worldwide Patents Pending
All brands and images are used for illustration purposes only and remain the property of the original owner.



Print Direct On A UV Flatbed Printer



No Tools Required



Replicates a Traditional Canvas Wrap

JetMaster Direct Print Photo Wrap Available From:

www.jetmaster-systems.com

+44 (0) 1992 571775 | info@jetmaster-systems.com | +1 856-456-3200

JETMASTER[®]

DIRECT PRINT PHOTO WRAP

Search *JetMaster Systems* on YouTube to watch the video

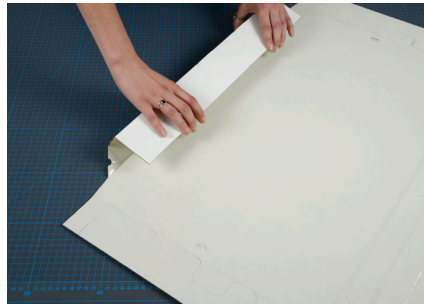
Print Flat - Ship Flat - Fold - Display

Assembly Instructions



Step 1:

After printing, place your Direct Print Photo Wrap on a flat surface and remove all corner sections.



Step 2:

Turn your Direct Print Photo Wrap face down and pre fold along the scored lines.



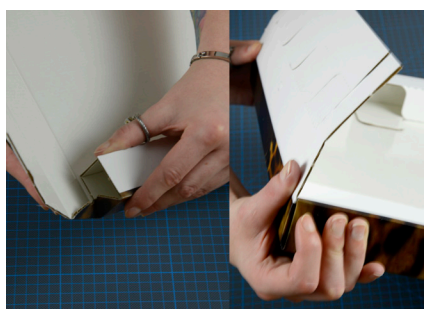
Step 3:

Remove all of the release liner by pulling all edges into the centre and lifting off.



Step 4:

Fold over each of the edges without corner tabs (the long sides on rectangular frames), push out the flaps and apply pressure to on the flaps to secure them.



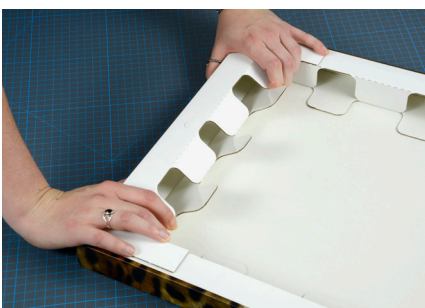
Step 5:

Fold up one of the edges with corner tabs (the short sides on rectangular frames) so it is square and tuck in the excess corner material.



Step 6:

Fold over the edge with corner tabs, making sure the edge of the corner tab is aligned with the inside of the frame and apply pressure on the tabs to secure the corners.



Step 7:

Push out the flaps and apply pressure to secure the edge to the back of the frame, repeat steps 5-7 for the other edge with corner tabs.



Step 8:

Fold up the edges of the backing tray and align with the back of the frame.



Step 9:

Push firmly on the backing tray to insert it into place and give a neat finish to your JetMaster Direct Print Photo Wrap.