

JETMASTER[®]

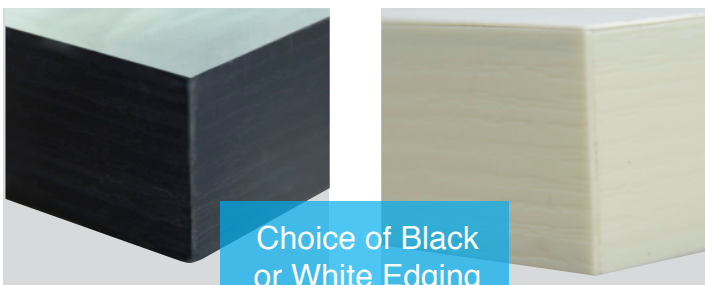
PHOTO PANEL

Print - Stick - Display

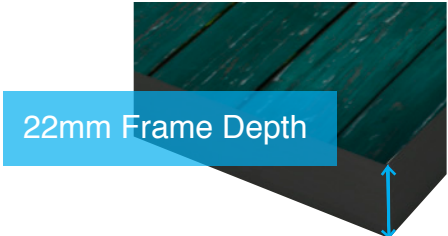
Order Your
Sample Today
+44 01992
571775



The new JetMaster Photo Panel creates effortless impact for your images. A lightweight alternative to solid MDF display blocks, available in a range of sizes with a choice of two smart matte finishes. The JetMaster Photo Panel is simple to create and can be wall mounted or used as an attractive addition to any desk.



Choice of Black
or White Edging



22mm Frame Depth



Available in
sample sizes
5"x7" and 8"x10"

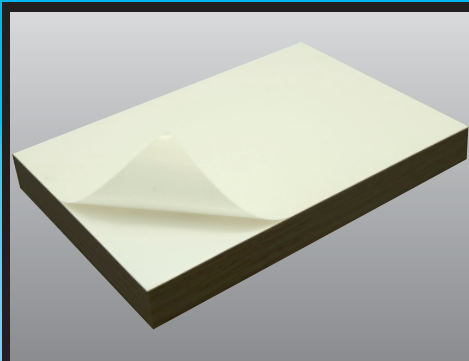
JET MASTER[®]

PHOTO PANEL

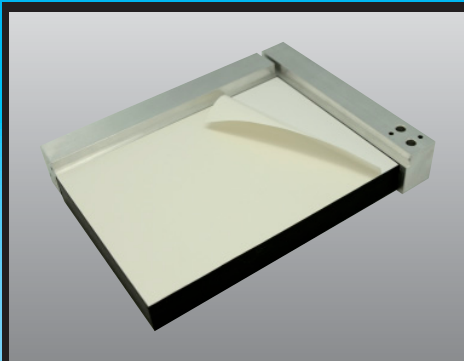
Print - Stick - Display

Assembly Instructions

To get the best results it is advisable to print your image slightly larger than the face size of the Photo Panel



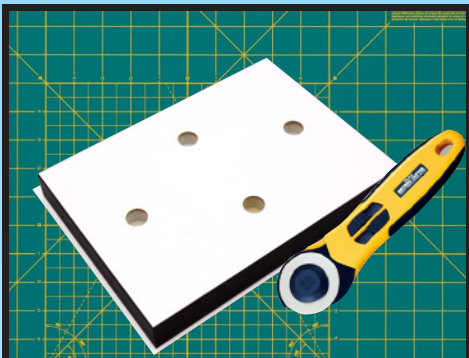
Step 1:
Peel back a small section of the release liner.



Step 2:
Place the photo panel into the alignment frame and fold back part of the release liner



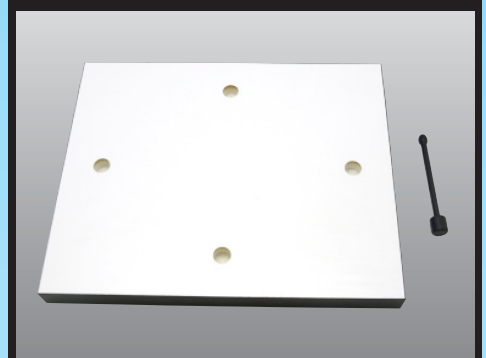
Step 3:
Position your image using the alignment frame. Remove the release liner and apply pressure using a roller.



Step 4:
Place your photo panel face down on a cutting mat and use a rotary cutting tool to remove the excess paper from the edges.



Step 5:
You now have a complete photo panel frame.



Step 6:
Decide whether you will hang it on the wall using the pre drilled holes or if you will put it on your desk using the stand provided.

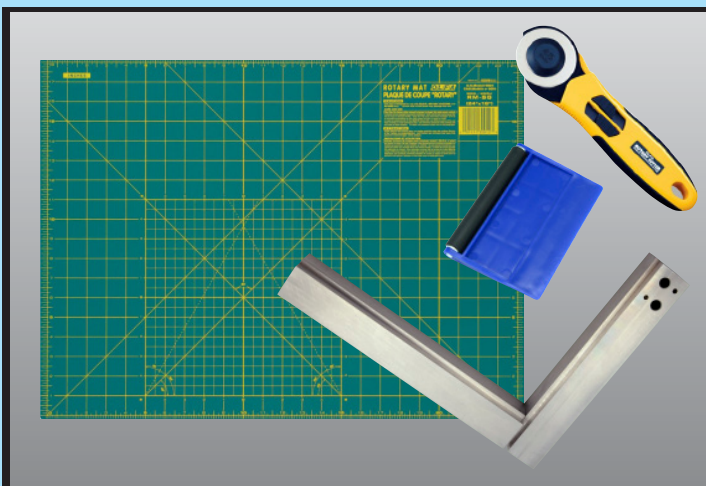


Photo Panel Assembly Kit

Each kit contains:

- 1 cutting mat
- 1 Rotary Cutter
- 1 Roller
- 1 Alignment

Frame

(Suitable for photo panels up to 8"x10")

To purchase your own photo panel assembly kit contact your photo panel supplier.

For more information and details of where to buy the JetMaster Photo Panel visit

www.jetmaster-systems.com

Print - Stick - Display