



***“If my only tool is a hammer,
then every problem is a nail.”***

Sholem Asch



Print Production for Sign and Display: Using the best tools for the job.

The law of the instrument, otherwise known as Maslow's hammer is a cognitive bias that involves an over-reliance on a familiar tool.

Using other creative tools to get your print jobs ready may be slowing you down. **PrintFactory** is the most complete production suite for banner, sign and Large Format Printing that is set to revolutionise the way you run your print shop.

PrintFactory is workflow software for wide format printers. It comes with a set of tools that work much harder and smarter than the average, standard RIP shipped with wide format printers today.

PrintFactory is a scalable solution for your printing requirements from a small independent print shop to industrial scale business.

PrintFactory is easier to use.
It was made by printers, for printers.



10 Things Large Format Printers and Sign Makers can do with the right tools

1. PreFlight and fix incoming production files quickly	04
2. Manage and control colour management for the print process	05
3. Create or edit complex cutting paths	06
4. Use simple '1-Click' production commands	07
5. Tile oversized jobs	08
6. Nest irregular shaped jobs	09
7. Easily nest double sided jobs	10
8. Instantly create print and cut jobs for any connected device	11
9. Smart nesting and job submission	12
10. Reduce colour errors and ink bills	13

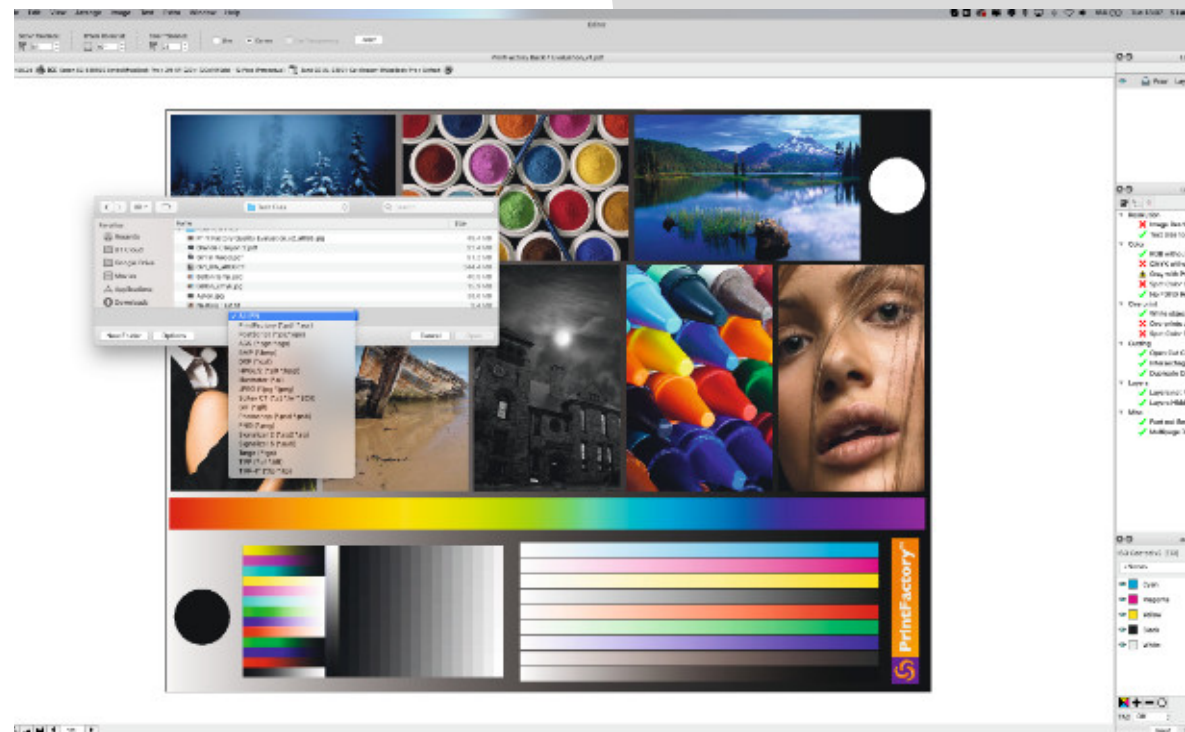
1. PreFlight and fix incoming production files quickly

PrintFactory's built-in Editor application lets your team preflight files and do pre-press corrections to original files in almost any format. Editor will produce a report on the file upon opening it.

Fonts, colour-corrections, layout changes and more, can all be identified and fixed and low resolution images can be swapped for high-res ones; all without the cost of expensive third-party applications.

Check and fixup work delivered in the following formats:

- › PDF, PDF-X, EPS, PostScript Level 3
- › Adobe Illustrator AI, Adobe Photoshop PSD/PSB
- › TIFF, TIFF-IT, HPGL/2, DXF, Scitex CT/LW
- › JPEG, PNG, GIF, BMP, Targa

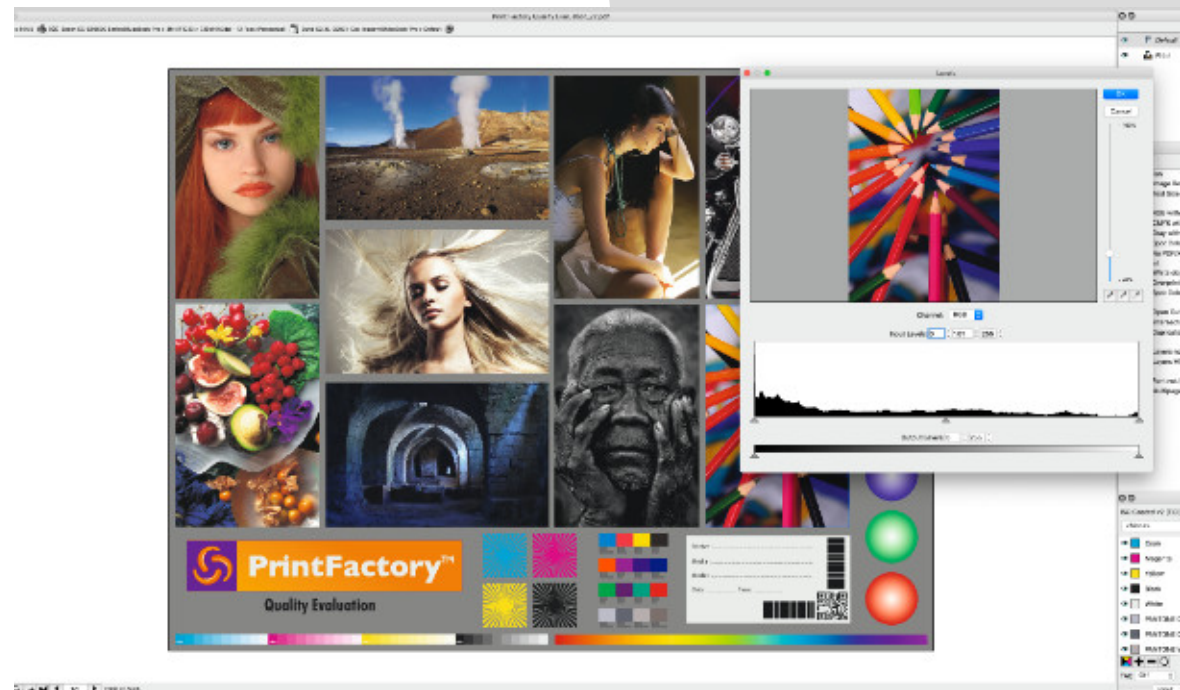


2. Manage and control colour management for the print process

PrintFactory's Editor allows you to preflight, identify and change colour settings in any file. It's advanced colour functions dramatically reduce errors due to incorrect colour profiles.

The preflight tool instantly selects the elements for attention and conversion to the correct colour.

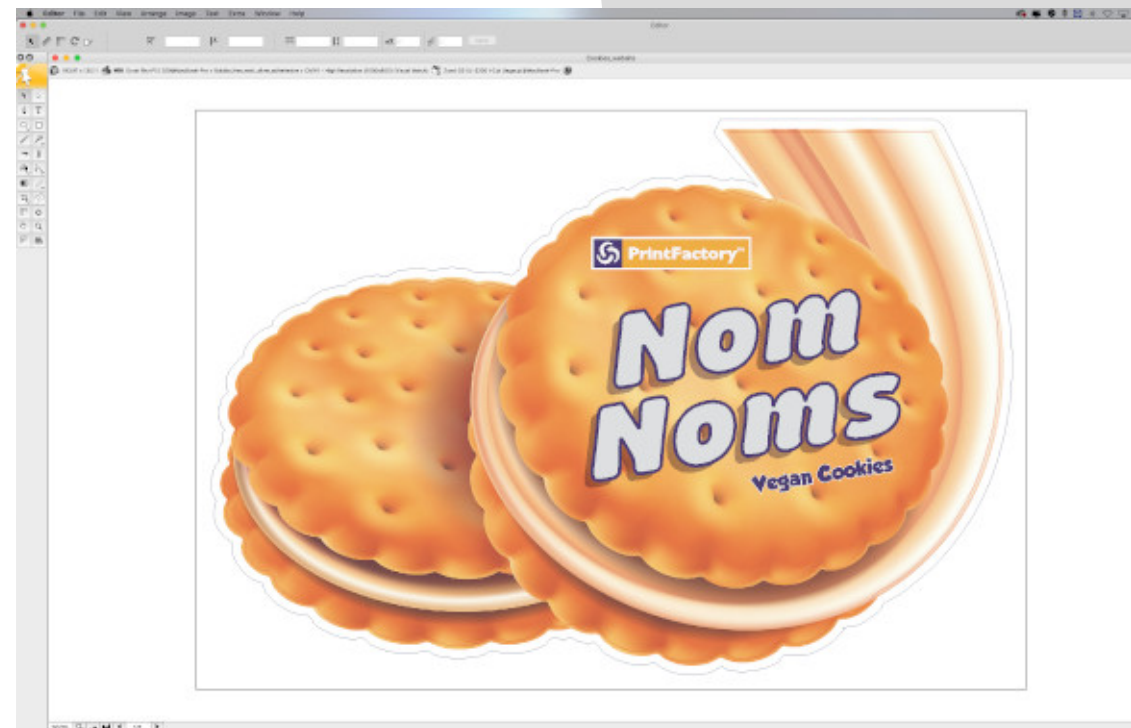
- › In-file colour management
- › Real production proofs with live status
- › Clean spot colours
- › Special multicolour Intents
- › Boost chroma/saturation
- › Apply standard light source



3. Create or edit complex cutting paths

PrintFactory Editor's '1-Click' tools allow you to create and edit cutting paths quickly and easily. What takes hours of manual work in design applications, with Print Factory can be done in seconds.

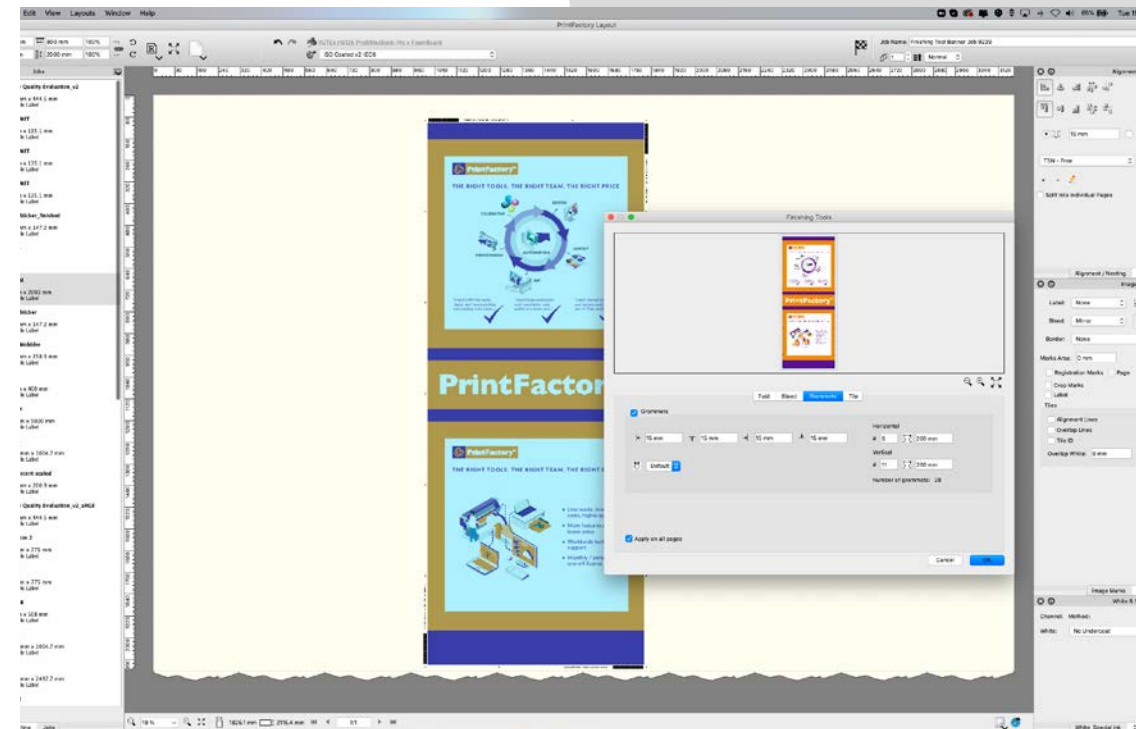
- › Find the contours in any file
- › Create new contours from any vector in the job
- › Draw with vector drawing tools
- › Expand/contract colours
- › Barcode support for most cutters



4. Use simple '1-Click' production commands

PrintFactory allows you to quickly and easily apply advanced production commands to any job using its '1-Click' functions:

- › Fast tiling and templating with production instructions
- › Easy additions of grommets, bleeds and folds
- › White channel generation functions take seconds
- › Remove channels for DTG textile printing
- › Instant Colorway mapping for textile printing

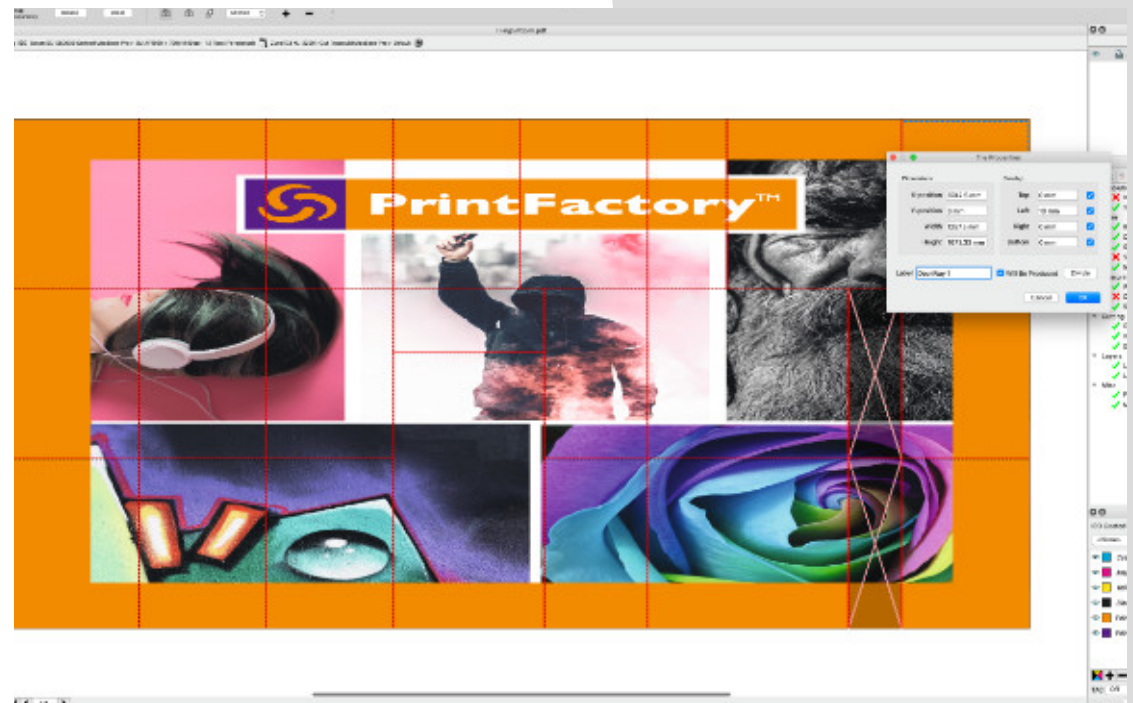


5. Tile oversized jobs

PrintFactory's '1-Click' tiling functions are ideal for special applications such as wall coverings, point of sale displays, exhibition booths, vehicle and building wraps.

Load pre-defined templates, or make your own and store them for later use - PrintFactory Editor takes the stress and hassle out of tiling large or difficult jobs.

- › Work with any tiling setup
- › All tools for vehicle wrap setups
- › Multi tiling setup per file
- › Multi-printer and substrate support
- › Mirror tiling for vehicle wraps
- › Save setups as templates
- › Guarantee optimum use of media

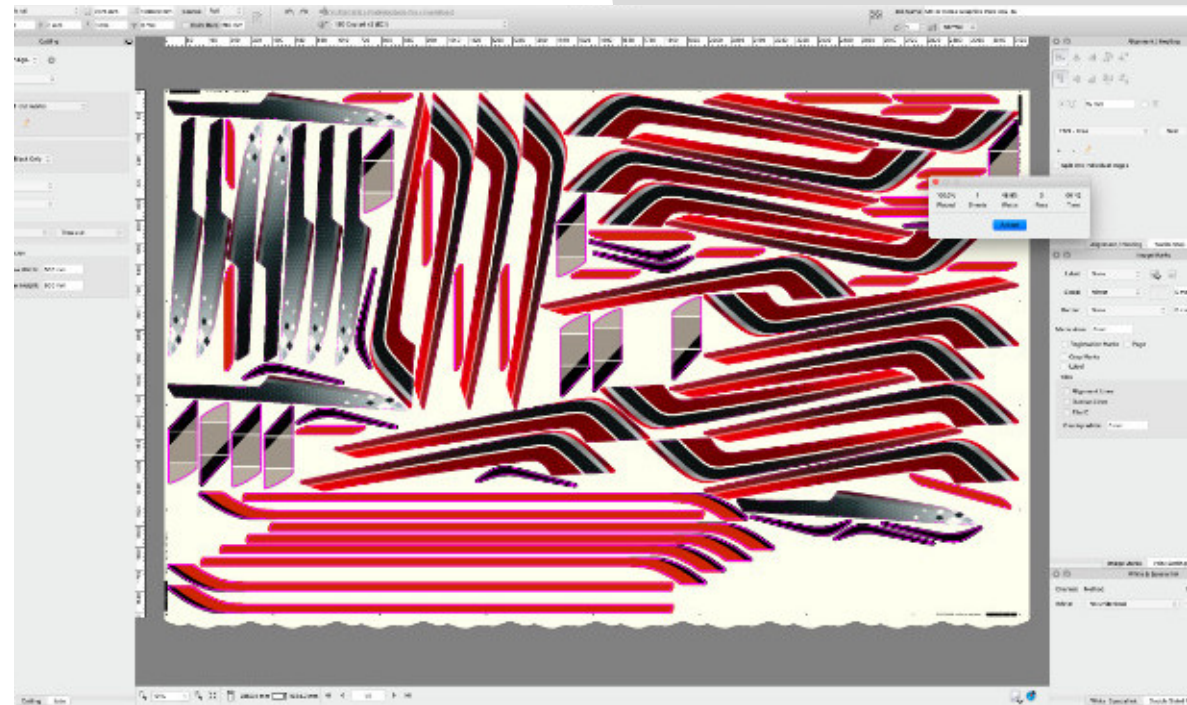


6. Nest irregular shaped jobs

PrintFactory Layout includes our high speed economical True Shape Nesting (TSN) algorithms. PrintFactory's TSN analyses the outlines of your files and calculates the best use of substrates; ensuring you will always get the lowest possible media consumption to print your job.

Layouts can be changed on the fly, allowing you to add files at the very last second - ideal for today's production pressures.

- › All the standard Layout features you're expecting
- › Manual just-in-time changes on the fly
- › Stack nesting and True Shape nesting made simple
- › Step-and-repeat with edit control for vector graphics
- › Easy double-sided printing
- › WYSIWYG job layouts
- › Send jobs to any connected device

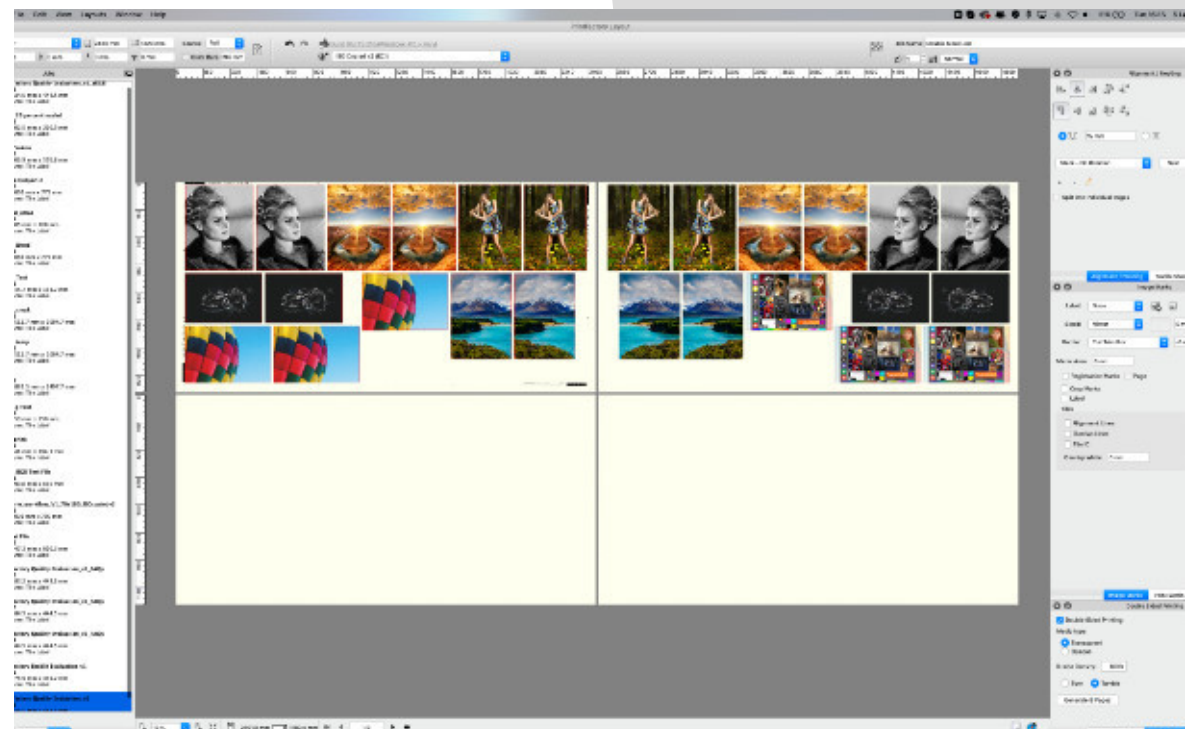


7. Easily nest double sided jobs

PrintFactory Layout ships with a bunch of 1-Click nesting features as standard. Not only does Layout look for the most economical layout for the job nest, it also generates the reverse side quickly and easily using the double-sided function.

Front/back designs will always be in sync with each other without the hassle of manually lining them up.

- › Turn and tumble option
- › Templates to speed up workflow
- › Automatic bleed calculation
- › Calculates overall 'ink filler' for soft signage (in conjunction with PrintFactory Calibrator)



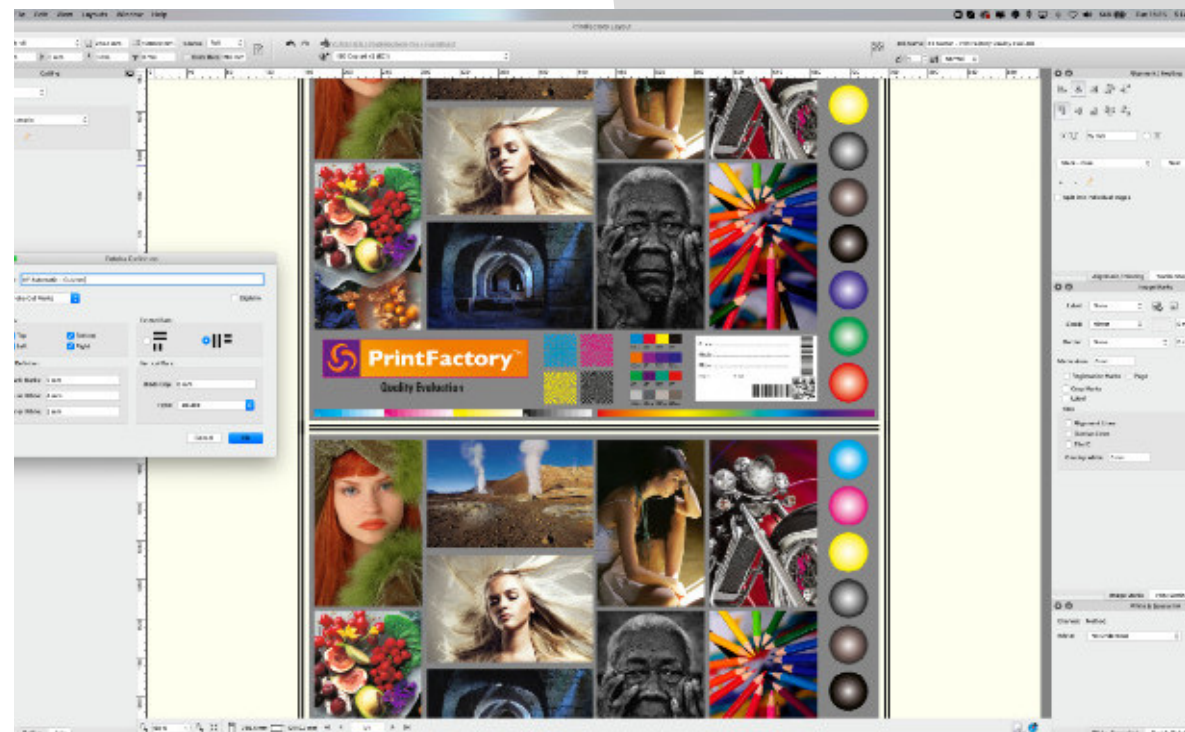
8. Instantly create print and cut jobs for any connected device

PrintFactory Layout can be used on any Mac or PC in the production environment - there is no limitation to the number of seats that can be installed.

Nested jobs can be sent to any printer or cutter, switching devices is as simple as pressing a few clicks of the mouse to select printer, media profile and cutter. Layout does the rest leaving you to get on with the next job.

With our remote working function, you don't even have to be in the office.

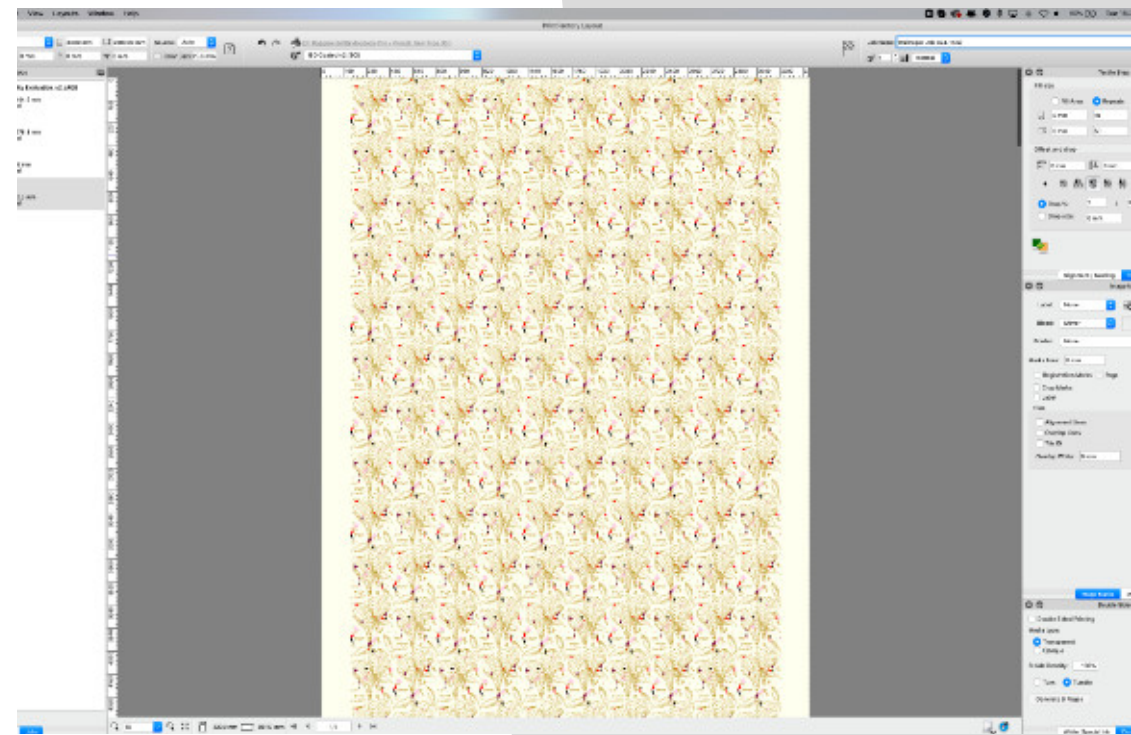
- › **Print and cut with ease**
- › **Automatic registration marks for cutters**
- › **Barcodes / QR Codes to prevent mismatching**
- › **Cut line extraction**
- › **Tool mapping**
- › **Butt-up option**



9. Smart nesting and job submission

PrintFactory Layout allows you to save previous production settings and load them quickly and easily for future work; saving hours of production time normally lost on repetitive tasks.

- › **Smarter nesting from job templates**
- › **Reproduce bleeds, folds, and tiling accurately**
- › **Remove repetitive, manual tasks**
- › **Reduce layout errors**
- › **Minimise material wastage**

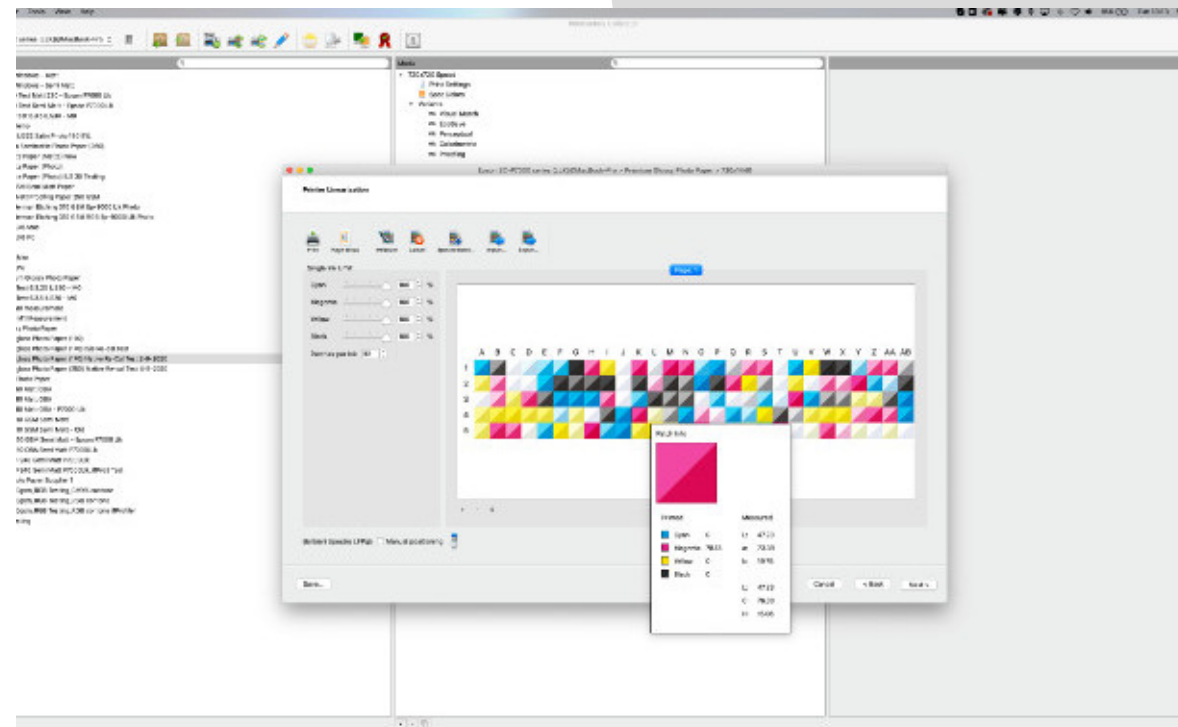


10. Reduce colour errors and ink bills

PrintFactory's VISU™ Device Link profiles ensure you remove colour errors, and 'on-press proofing' with predictable colour, clean spot colors and neutral greys while reducing ink consumption by as much as 25%.

PrintFactory's 3 Step profiling wizard puts professional colour results into the hands of any large format printer, without the usual costs associated with other solutions.

- › Easy to use, centrally managed profiling
- › VISU™ Device-Link profiles give highly accurate results
- › RGB, CMYK or Multichannel profiling
- › Visual Match colour across all devices
- › Cleaner Spot Colours, better grey balance
- › Support for 'Special Channels' - orange, violet, green, etc
- › White calibration for use decor/glass applications, etc
- › Light adaptation tool for instore lighting



More haste. Less waste.

PrintFactory is the most complete production suite for banner, sign and super wide format printing that is set to revolutionize the way you run your print shop.

For more information about PrintFactory speak to your Dealer or contact:

sales@printfactory.cloud
printfactory.cloud

