

# SummaSign Pro SL-Series

## SummaSign cutters set the industry standard for versatility, power and performance

SummaSign Pro D1400 SL



### Highest Quality

The highest quality European engineering and craftsmanship goes into every SummaSign Pro SL. With a long track record of patented innovations and technical advancements, SummaSign Pro SL exceeds the performance standards and specifications of any other vinyl cutter.

### Longest High-Speed Plots

Advanced media flanges combined with precisely balanced rollers ensure straight media feeding, even when you're cutting an entire 50m roll. At a cutting speed of 141 cm/sec, your shop's productivity will increase considerably, where as your project turnaround time will decrease.

### 4 Plotting Modes

For maximum output flexibility the versatile SummaSign Pro SL gives you a choice of cutting, flex-cutting, pouncing or pen plotting modes.

Cut vinyl, create paint stencils for murals or render detailed line drawings and schematics, all with the same machine.

### Perfect contours with OPOS 2.0

The enhanced Optical Positioning System 2.0 on SummaSign Pro SL scans pre-printed registration marks on the vinyl. Then, the cutter's own internal programming repositions the plot data, adjusting it for rotation and distortion. This results in a highly automated and accurate contour cutting of printed vinyl graphics.

### Thickest Material Cutting

With up to 600 grams of cutting force, SummaSign powers through heavy sandblast, paint mask and reflective materials with incredible ease, speed and accuracy.

### Extreme Accuracy

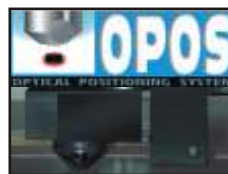
For the most accurate media tracking in the world, Summa relies on patented, precision grid rollers. Repeatability is guaranteed to within 1/10th of a millimeter on plots up to 12 meters long !



Summa's patented drive drum is precision engineered to exacting outside dimensions, then specially plated to resist wearing that can alter tracking performance. No other cutters in the world are more accurate than Summa or maintain their accuracy longer.



SummaSign Pro SL is loaded with several intelligent routines optimizing the cutting data. A mass of features give the machine extra capabilities like the pouncing option or the 'FlexCut' feature which makes it possible to cut completely through the media.



During repetitive cutting jobs the fully automated OPOS 2.0 increases the workflow productivity. The Load Repetitive functions dramatically reduce operator intervention, while maintaining the same pinpoint accuracy OPOS when provides die-cutting individual graphics.



Included with every SummaSign cutter is Summa's powerful and easy-to-use Cutter Control software. It makes the world's most advanced and powerful cutters also the easiest to use. Adjust your plotter settings right from your PC !



SummaSign's intuitive, easy-to-read control panel makes setting changes fast and simple. Set for instance speed, knife pressure and blade offset or do a 're-cut' with push-button ease.

**Summa**

## Tangential Cutting



Tangential cutting technology guarantees a superior performance compared to commonly used swivel knife techniques. The direction of the tangential knife is electronically controlled, by which T-series are capable of cutting very precisely and with very high pressures. The perfect cutting makes weeding easy, saving you a lot of valuable time. The patented nose piece avoids small pieces being pushed out of the vinyl while cutting. With up to 600 grams of cutting force, SummaSign powers through heavy sandblast, paint mask and reflective materials with incredible ease, speed and accuracy. With a SummaSign Pro SL T-model, you know you can do the job! More than ever, SummaSign SL Pro T-Series are replacing flatbed or laser cutters for industrial jobs. If you don't need these extra capabilities now, be aware that all SummaSign Pro SL D-models can be upgraded with a tangential head, assuring you many profitable years with your SummaSign.



Technical Specifications	
<b>Velocity</b>	Up to 141 cm/sec / 56 ips, diagonal
<b>Acceleration</b>	Up to 4 g diagonal
<b>Knife Pressure</b>	D Series : 0 - 400 grams, in 5-gram steps T Series : 0 - 600 grams, in 5-gram steps
<b>Addressable Resolution</b>	0,025 mm / 0.001 in. or 0,1 mm / 0.005 in. selectable
<b>Mechanical Resolution</b>	0,0127 mm / 0.0005 in.
<b>Repeatability</b>	0,1 mm / ± 0.004 in. up to 12 m / 40 ft : vinyl < 760 mm 0,1 mm / ± 0.004 in. up to 4 m / 13 ft : vinyl > 760 mm
<b>Tool Compatibility</b>	<ul style="list-style-type: none"> <li>• Knife and holder for standard, reflective and fluorescent vinyls</li> <li>• Thick material knife and holder for sandblast resist and other thick materials</li> <li>• Pen and Pouncing tool (Pouncing tool - optional)</li> <li>• Tangential cutting head (on T-versions)</li> </ul>
<b>Media Width</b>	D/T 750 SL : 70 - 762 mm / 2.7 - 30 in. D/T 1010 SL : 120 - 1020 mm / 4.7 - 40 in. (Accepts media up to 1200 mm / 47 in.) D/T 1400 SL : 120 - 1370 mm / 4.7 - 54 in. (Accepts media up to 1545 mm / 61 in.) D/T 1600 SL : 170 - 1620 mm / 6.7 - 63.8 in.
<b>Media Length</b>	50 m / 150 ft
<b>Max. Media Thickness</b>	<b>Drag knife</b> : standard blade: 0,25 mm / 0.010 in. - sandblast blade: 0,8 mm / 0.03 in. <b>Tang. Knife</b> : standard blade: 0,25 mm / 0.010 in. - sandblast blade: 1,2 mm / 0.04 in.
<b>Cutting Area</b>	D750 SL : 703 mm x 50 m / 27.6 in. x 164 ft T750 SL : 719 mm x 50 m / 28.3 in. x 164 ft D/T 1010 SL : 995 mm x 50 m / 39.2 in. x 164 ft D/T 1400 SL : 1345 mm x 50 m / 53 in. x 164 ft D/T 1600 SL : 1575 mm x 50 m / 62 in. x 164 ft
<b>Buffer Size</b>	4 MB
<b>Interface</b>	Serial RS-232 C / Centronics parallel / USB
<b>Baud Rate</b>	up to 38.400 baud
<b>Firmware</b>	DMPL, HPGL, HP-GL/2
<b>Power Requirements</b>	100 -130 / 220 - 240 Vac, 48-62 Hz, 85 W max
<b>Environment</b>	5 to 35° C, 40 to 95° F, relative humidity 35 to 80% non condensing
<b>HxWxD</b>	D/T 750 SL : 255 x 1270 x 550 mm / 10 x 50 x 21.6 in. D/T 1010 SL : 1100 (with stand) x 1670 x 740 mm / 43.3 x 65.7 x 29.1 in. D/T 1400 SL : 1100 (with stand) x 2015 x 740 mm / 43.3 x 79 x 29.1 in. D/T 1600 SL : 1100 (with stand) x 2250 x 740 mm / 43.3 x 88.6 x 29.1 in.
<b>Weight</b>	D/T 750 SL : 30 kg / 66.1 lbs D/T 1010 SL : 58 kg / 127.9 lbs (with stand) D/T 1400 SL : 66 kg / 145.5 lbs (with stand) D/T 1600 SL : 73 kg / 161 lbs (with stand)

### SummaSign SL cutters come with:

- Stand with media basket (1010, 1400 & 1600 model)
- OPOS 2.0 : Optical Positioning System
- Long plot media feed system
- Media roll-end flanges
- Media cut-off knife
- RS-232 data cable / USB cable
- Power Cord
- Multilingual Manuals on CD
- Printed multilingual 'Quick Start' manual
- Summa Cutter Control software
- Cutting program for Windows with CorelDraw plug-in
- Drag model:
  - 2 drag knives and 1 holder
  - 1 fibre tip pen
- Tangential model:
  - 2 standard knives
  - 1 holder & standard nose piece
  - 1 sandblast knife & nose piece
  - 1 drag knife and holder
  - 1 ballpoint pen

### Optional Accessories

- Stand with media basket (750 model)
- T-series upgrade for D-series
- Pouncing toolkit:
  - 2 pouncing pins and 1 holder
  - 10 meters pouncing strip
  - Multilingual manual
- Sandblast knife holder for D-series
- Sandblast knife for D-series
- Ceramic knife for T-series
- Double tip knife for T-series

**Note:** Specifications subject to change without notice.  
© Copyright 2004, Summa. All rights reserved.  
All products or brand names mentioned herein are trademarks or registered trademarks of their respective holders.

Local Summa Dealer:

## Summa

Rochesterlaan 6 - 8470 Gistel, Belgium  
Tel : +32 59 270011 Fax : +32 59 270063  
E-mail : info@summa.be  
[www.summa.be](http://www.summa.be)

Partnumber : MI3010E rev:6