

SummaCut™

D60 (FX/Pharos)

D120 Pharos

D140 Pharos

D160 Pharos

performance vinyl and contour cutters



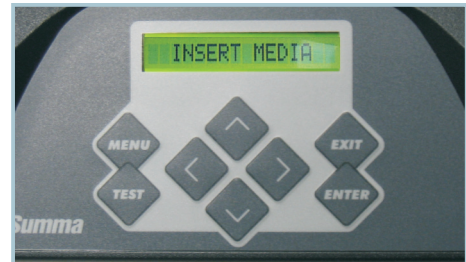
Vinyl cutters that set the industry standard for performance and value

Summa engineers know there's not a more important vinyl cutter feature than tracking. That's why every cutter we build starts with our exclusive and patented MicroSprocket™ grit roller. Milled from the finest materials, in a unique process that assures each roller has an exacting diameter, we then specially coat each roller to eliminate the risk of wear and oxidation that can degrade tracking over time.

Quality craftsmanship is about more than just low price. It's about value. With cutting performance that rivals others' top-of-the-line cutters, it's no wonder that the affordably priced SummaCut D60 is one of the most popular vinyl cutters ever built.



The Pharos series is a new evolution on the SummaCut platform. The OPOS X technology of the high-end S-Class cutting plotter has been integrated, making sure that the Summacut Pharos is capable of reading cross-marks for contour cutting not only on standard materials but also on reflective, holographic or mirroring materials as well as through different kinds of laminates. The SummaCut uses already since a long time the most complex algorithms to compensate any deformation of the print, and now it uses the best sensor technique, this makes the Pharos a winning contour cutter. In order to improve productivity, SummaCut Pharos supports Barcode reading and similar to the professional S-Class the OPOS system is automatically activated and deactivated for continuous working without operator intervention.



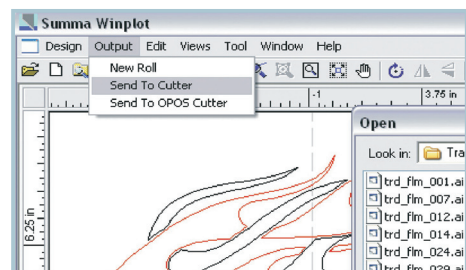
The large, easy-to-use control panel that allows you to quickly and easily change settings like speed, pressure and plot mode.



OPOS X contour-cutting alignment (on Pharos-models) means you can die-cut valuable printed vinyl graphics with complete confidence.



SummaCut Pharos' adjustable width pinch rollers let you cut everything from scraps as narrow as 7 cm on D60 to full rollwidths.



WinPlot cut-software is included along with free updates from our Web site. It's also dongle-free and can be installed on all your windows (98, 2000, XP, Vista) computers.

PHAROS Series

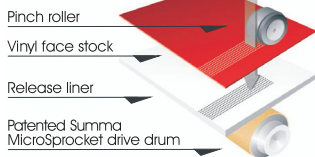
NEW!



Model	D60 (FX / Pharos)	D120 Pharos	D140 Pharos	D160 Pharos
Type	60 cm drag knife	120 cm drag knife	135 cm drag knife	157 cm drag knife
Max Media Width	7 to 66 cm (sheets up 77 cm) Pharos: 7 to 67 cm D60 FX: Roll: 11.5 - 66 cm / sheet 11.5 - 77 mm - The FX has 6 media width settings: 1) >595 mm (61 cm) 2) >490 mm (50 cm) 3) >395 mm (40 cm) 4) >290 mm (A3) 5) >210 mm (A4) 6) >115 mm (scrap) *Sensor disabled	Pharos: 12 to 127 cm	Pharos: 18 to 142 cm	Pharos: 18 to 164 cm
Cutting Area	60 cm x 50 meter Pharos: extended mode: 63 cm D60 FX: 1) 575 mm x 50 m 2) 470 mm x 50 m 3) 375 mm x 50 m 4) 270 mm x 50 m 5) 190 mm x 50 m 6) 95 mm x 50 m	120 cm x 50 meter Pharos: extended mode: 123 cm	135 cm x 50 meter Pharos: extended mode: 138 cm	157.5 cm x 50 meter Pharos: extended mode: 160.5 cm
Dimensions	100 x 35 x 30 cm	160 x 68 x 112 cm	175 x 68 x 114.5 cm	198 x 68 x 114.5 cm
Repeatability (guaranteed)	Within ±0.1 mm on plots: up to 8 m long on rolls up to 760 mm wide; up to 4 m long on rolls over 760 mm wide			
Speed	Up to 113 cm/sec diagonal			
Acceleration	Up to 3 g diagonal			
Knife Pressure	0 - 400 grams, in 5 gram increments			
Included Software	Cutter Control Software; WinPlot & MacSign Cut cutting software			

Material Transport

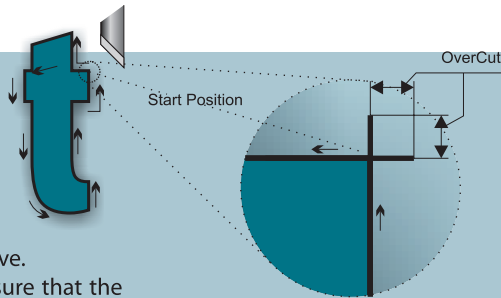
MicroSprocket™ Tracking System



Tracking is the ability to transport the media through the machine in a repetitive way. This ability makes sure that one single job is cut within specifications within the complete guaranteed tracking length. Nevertheless, longer jobs are also accepted by the cutter. The guaranteed tracking length also indicates the possibility of doing multiple jobs after each other (exceeding the guaranteed tracking length several times) without the need of reloading the media.

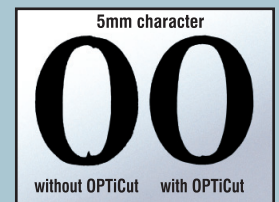
Overcut

“OverCut” extends the vector in the beginning and at the end of a curve. This way it makes sure that the design is completely cut through. Without the “OverCut” function, due to a variety of tolerances, the cut line may not be completely closed causing difficulties when weeding.



OptiCut

The OptiCut function specially developed for drag-knife cutters simulates tangential cutting. The OptiCut feature compensates for changes in blade offset by making a complex drag movement making sure that the knife is orientated correctly. This revolutionary technology gives you optimal cutting for the life of your blade.



Optional Stands for SummaCut D60 (FX/Pharos)



Sturdy Metal Stand on 4 roller casters (#399-050)
Sturdy Metal Stand with fabric basket on 4 roller casters (#399-075)

SummaCut without OPOS

